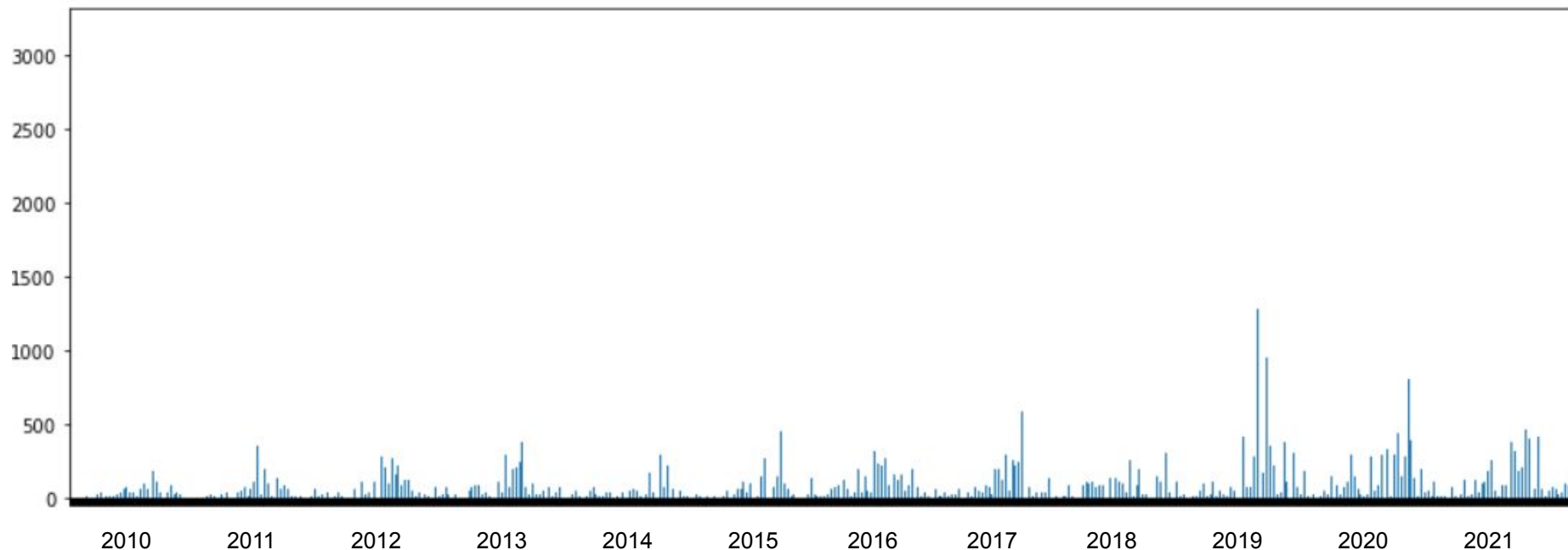


Espacialização de focos de calor no estado do Paraná

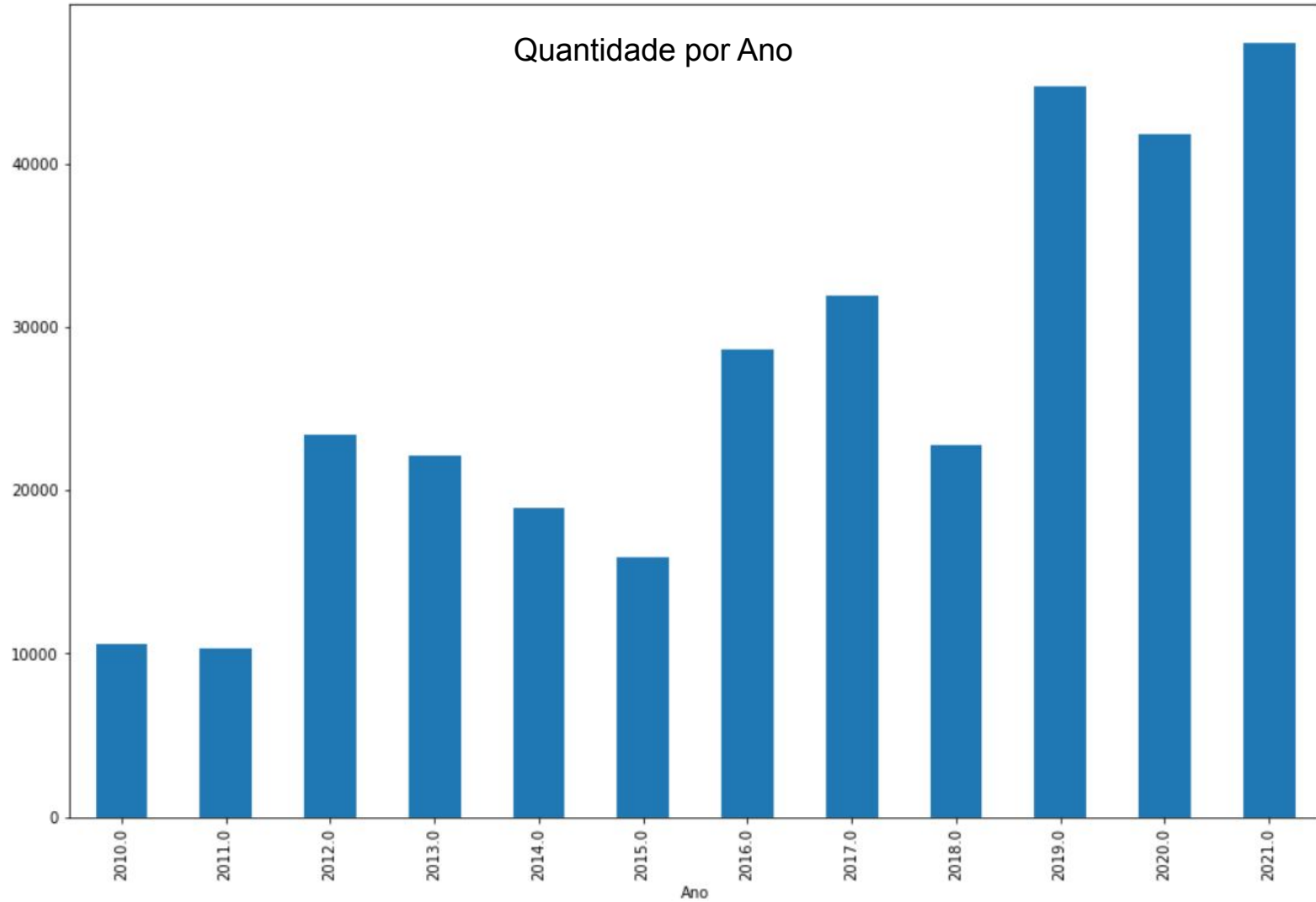
Dr. Gabriel H. A. Pereira
gabriel.pereira@simepar.br

Série Histórica de Focos de Calor no Estado do Paraná

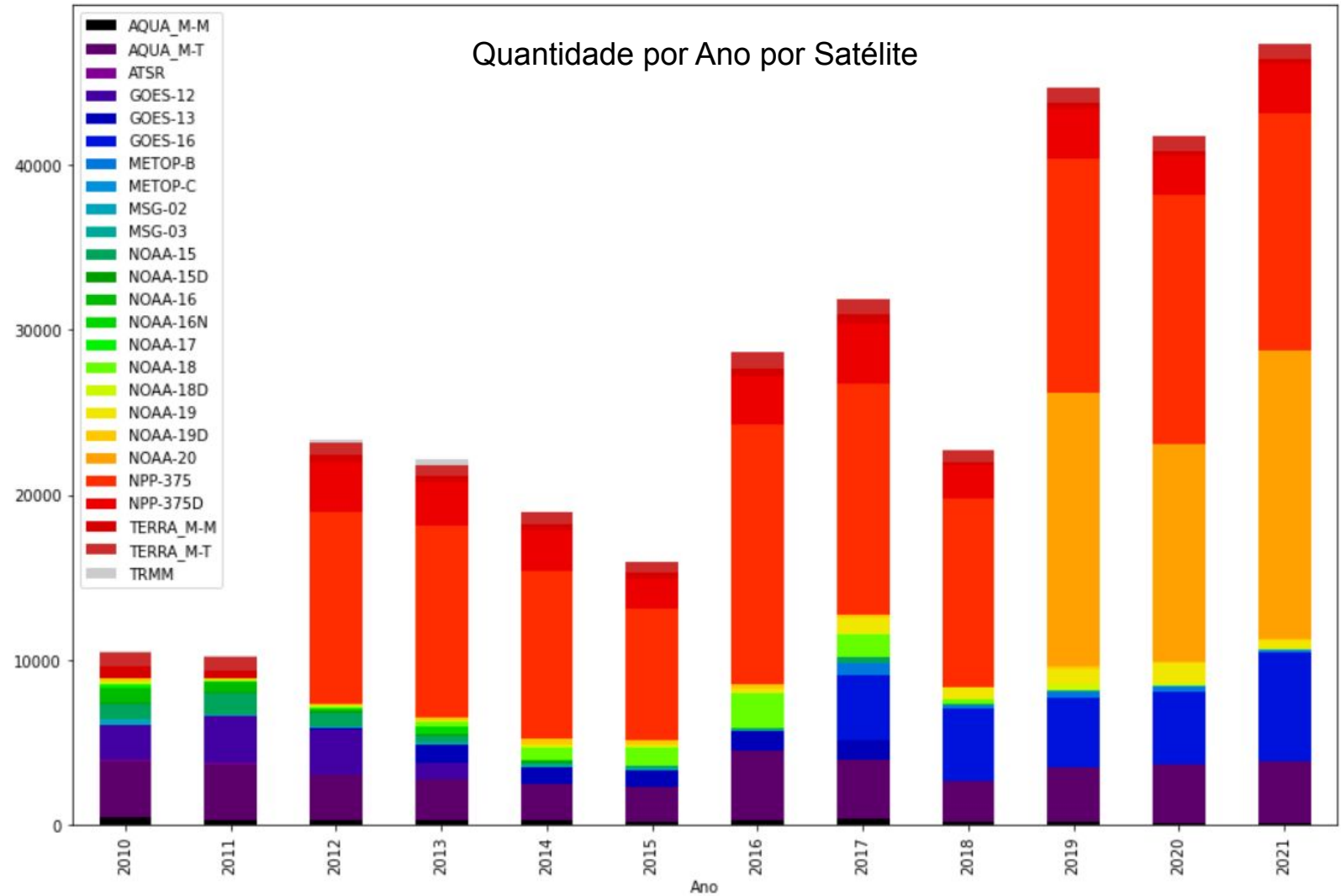
Dados INPE - 2010 a 2021



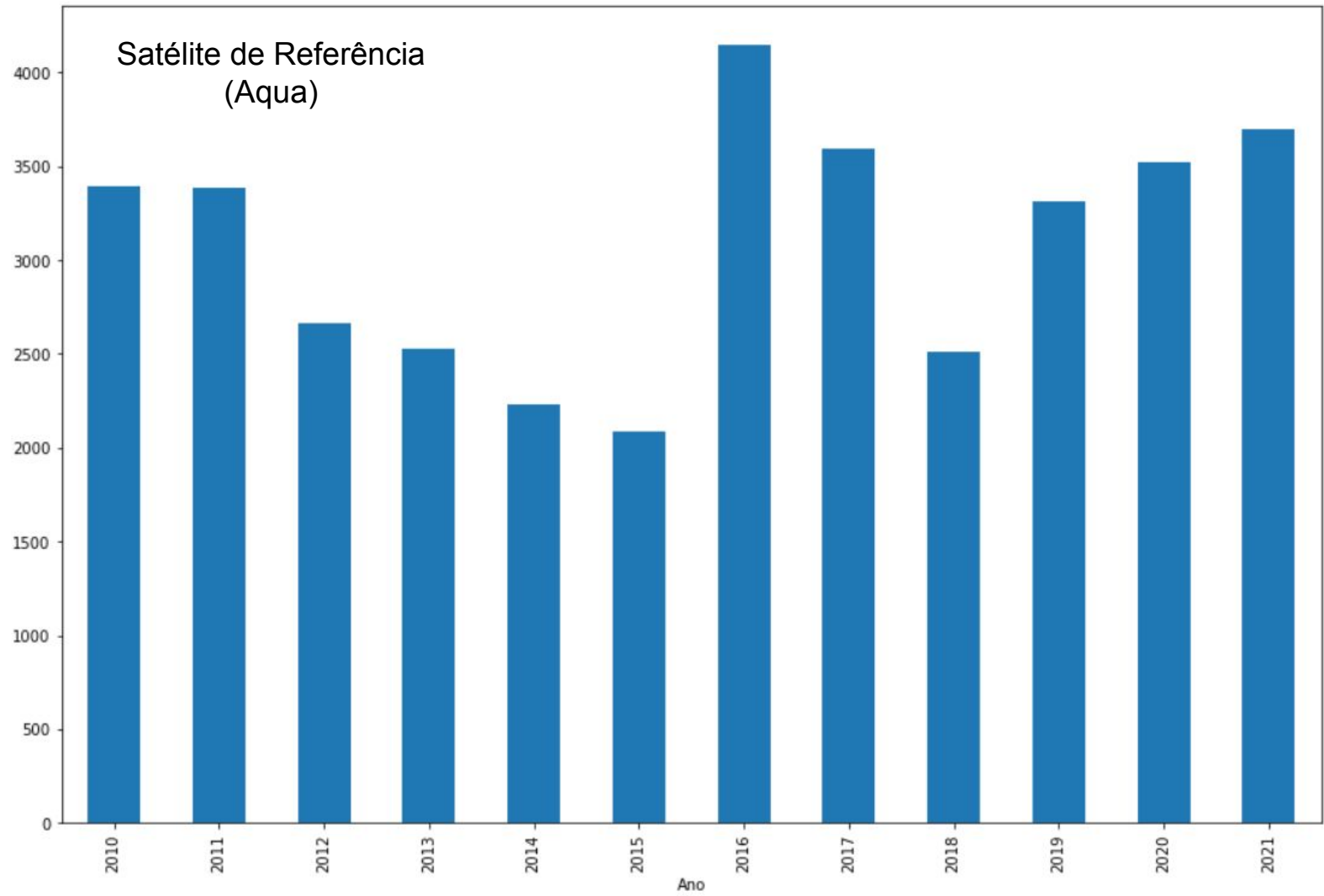
Quantidade por Ano



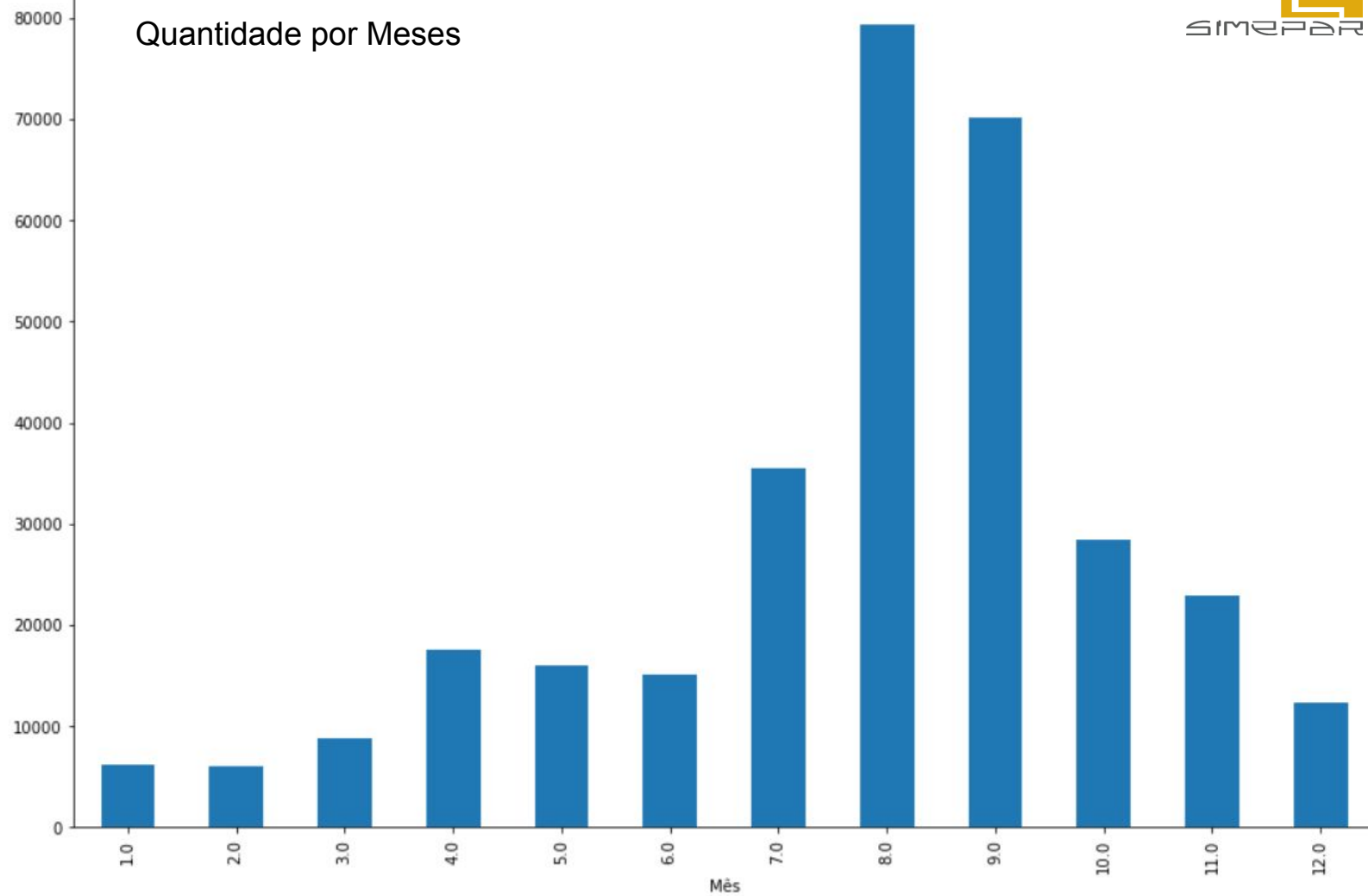
Quantidade por Ano por Satélite



Satélite de Referência (Aqua)

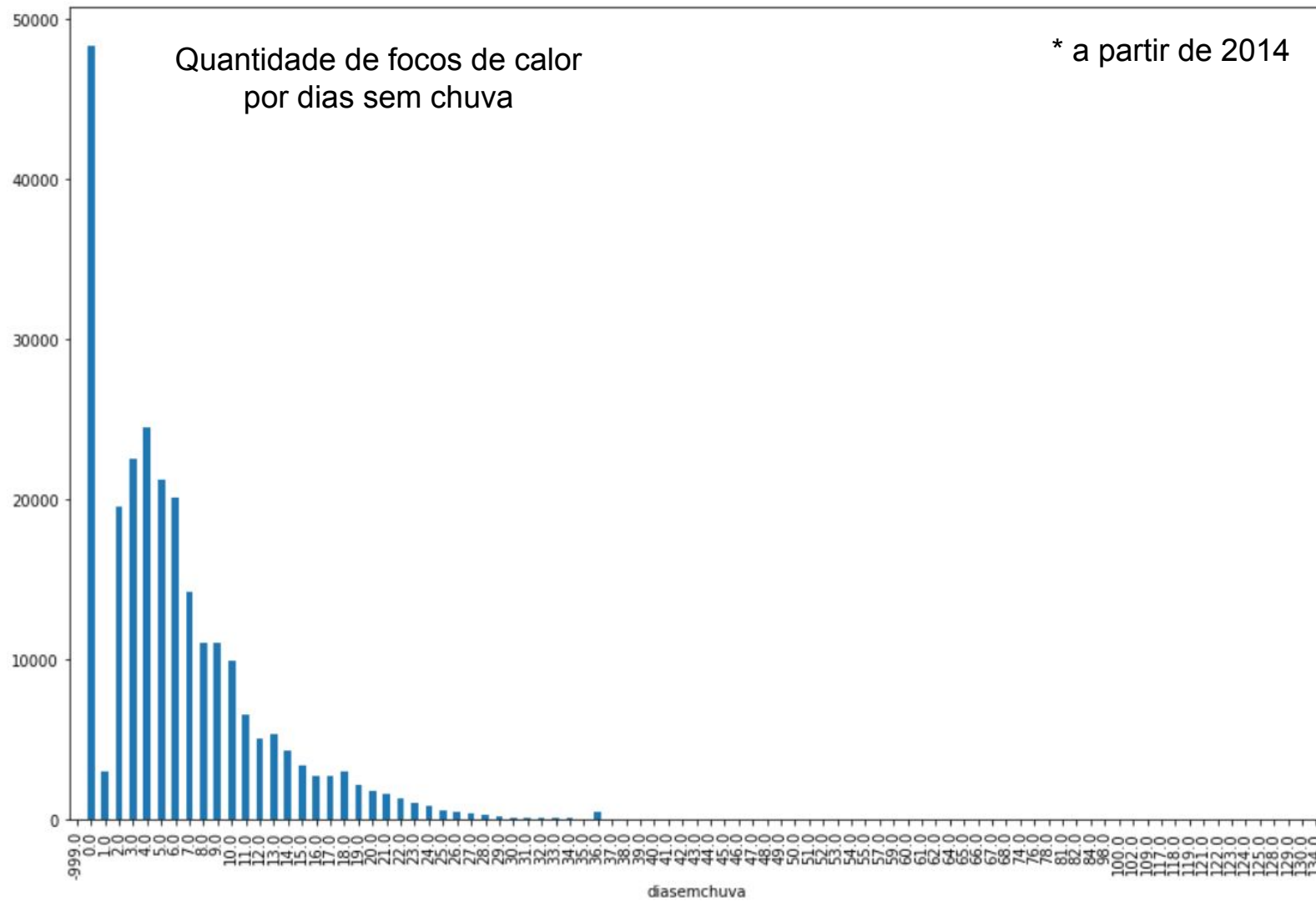


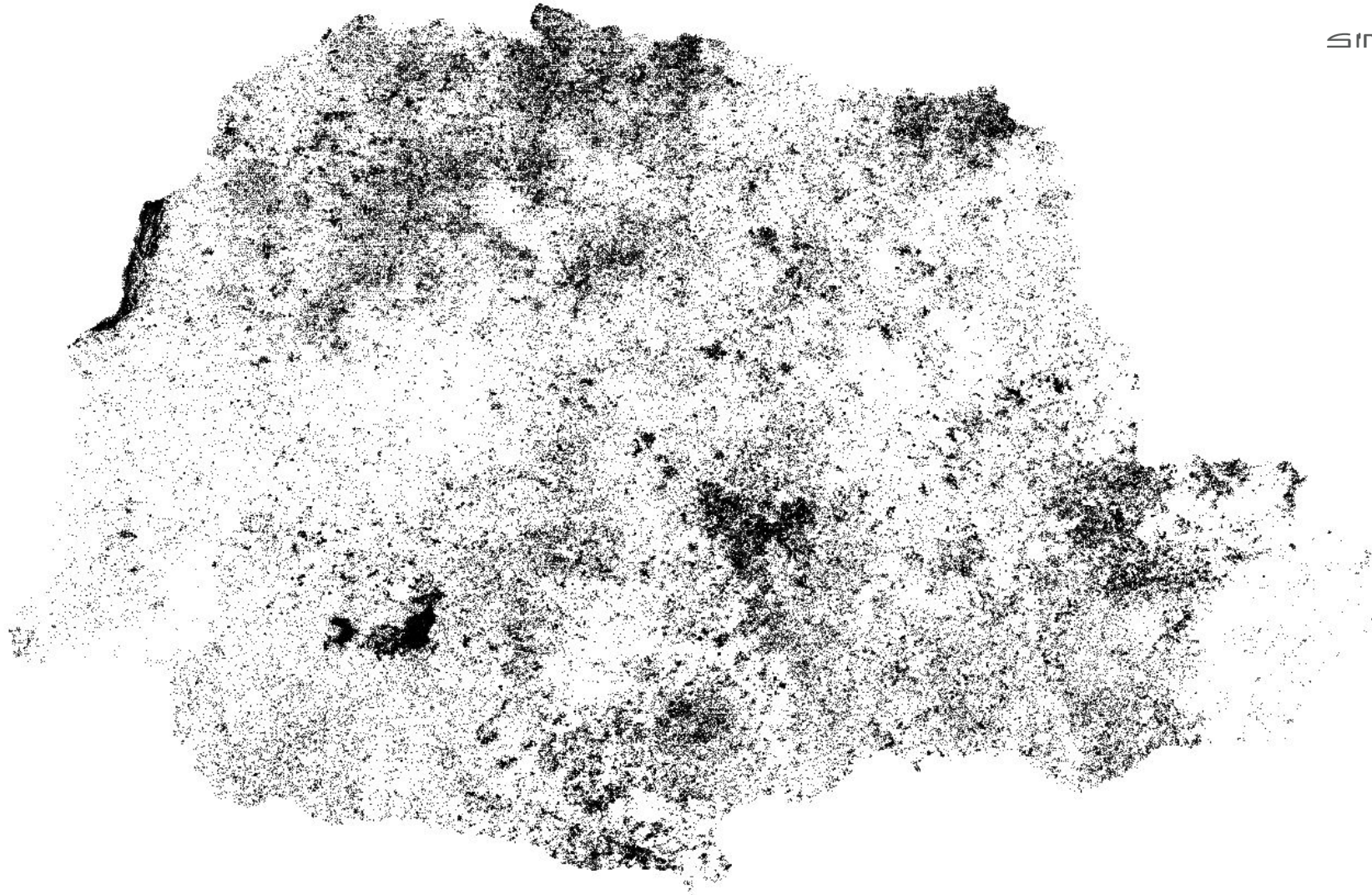
Quantidade por Meses

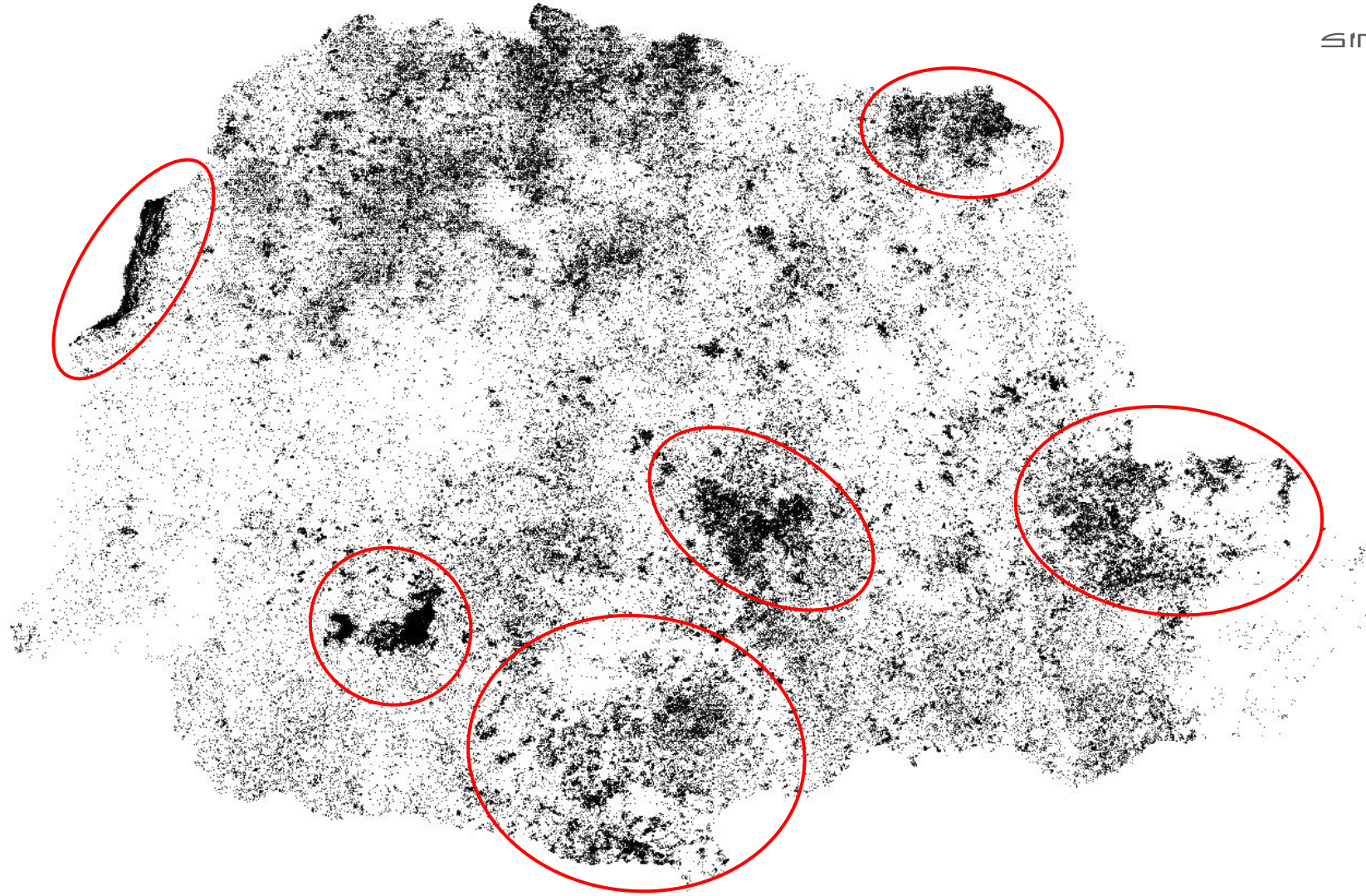


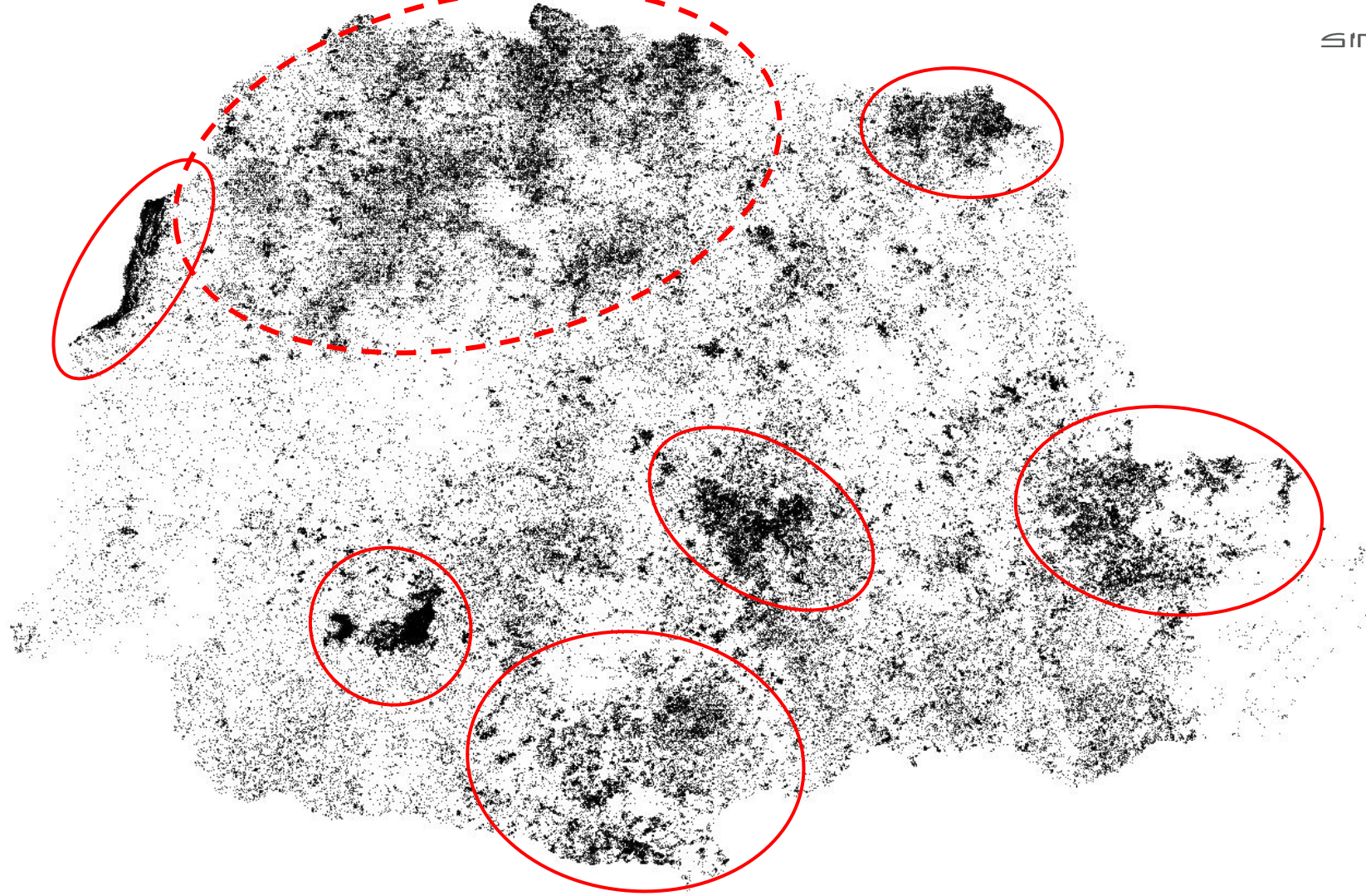
Quantidade de focos de calor por dias sem chuva

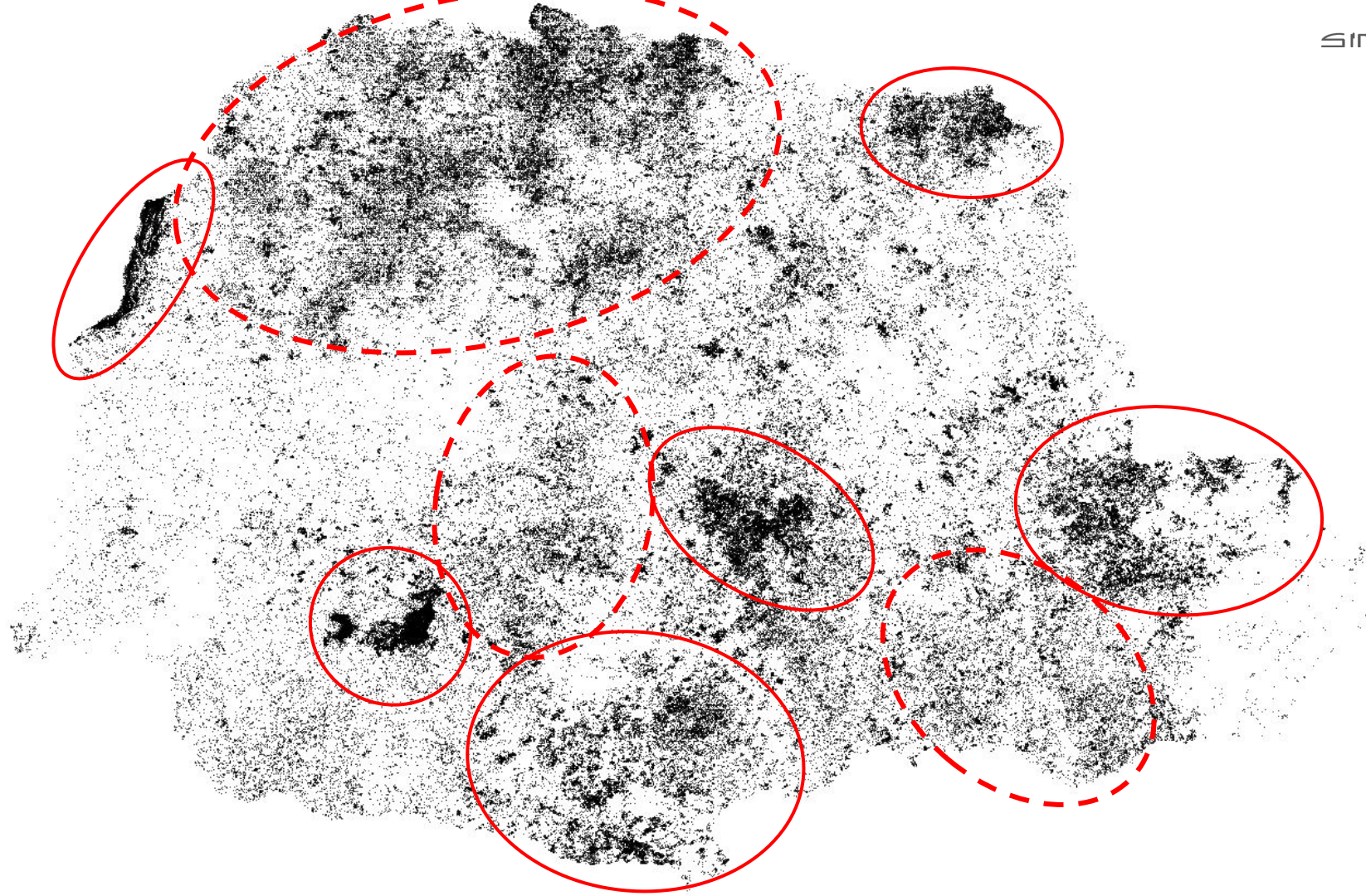
* a partir de 2014

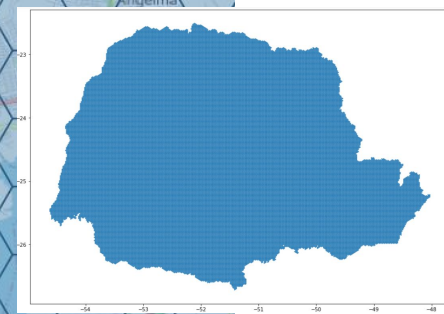
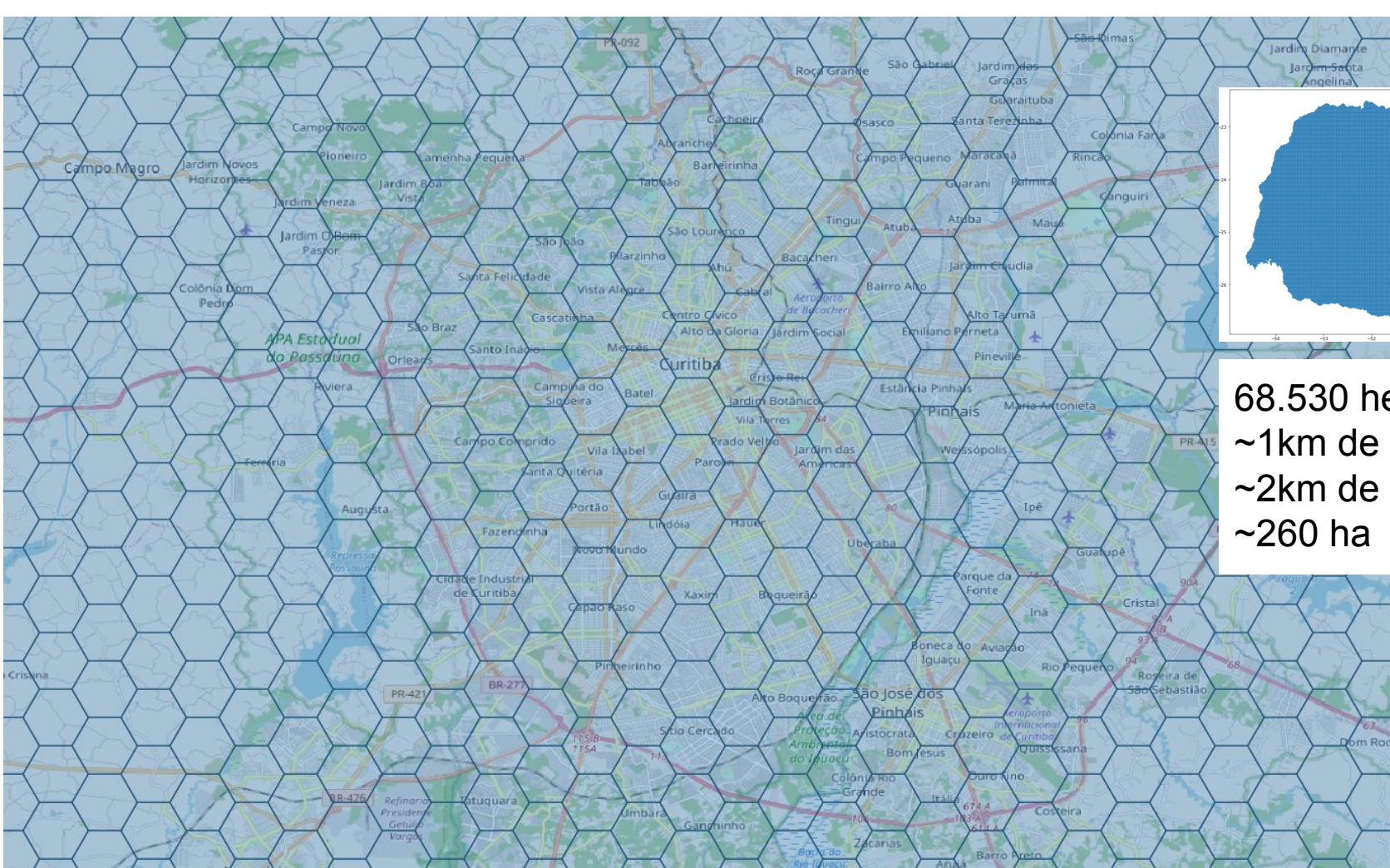




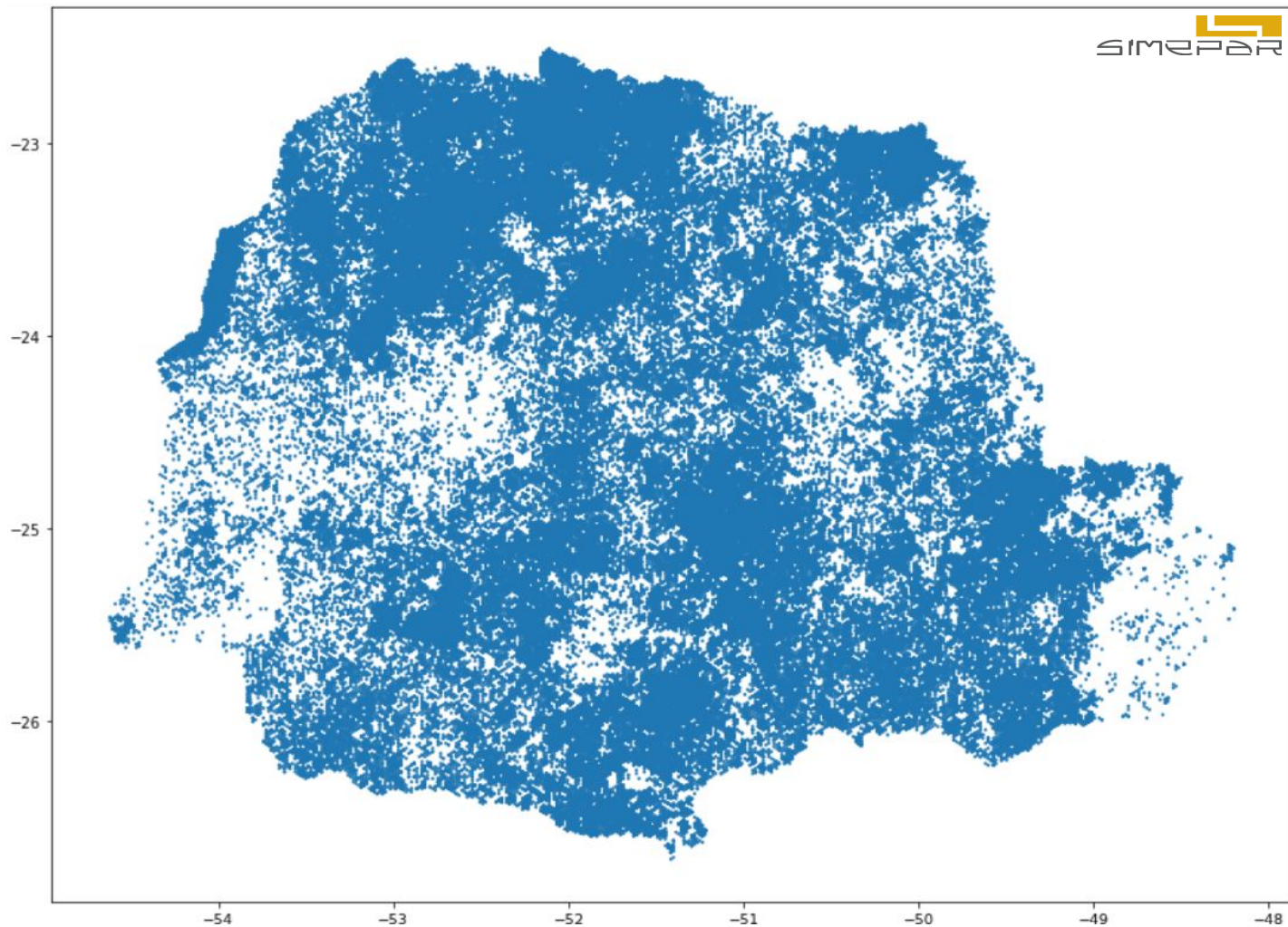








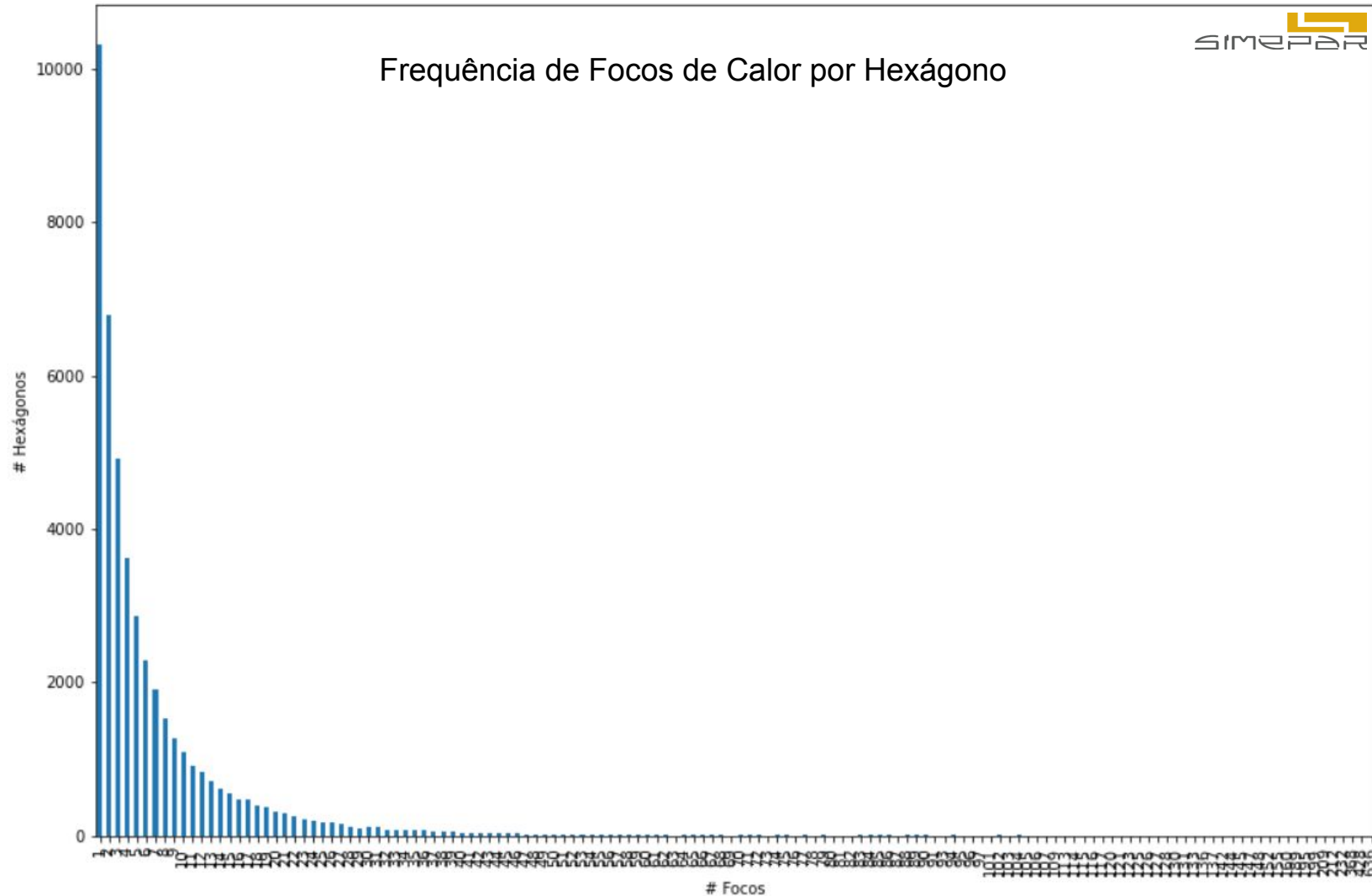
68.530 hexágonos
 ~1km de lado
 ~2km de “diâmetro”
 ~260 ha



41.051 hexágonos
com focos

59,90%

Frequência de Focos de Calor por Hexágono



Quantidade de Focos de Calor nos hexágonos

-23

-24

-25

-26

-54

-53

-52

-51

-50

-49

-48

SIMEPAR

Focos

100

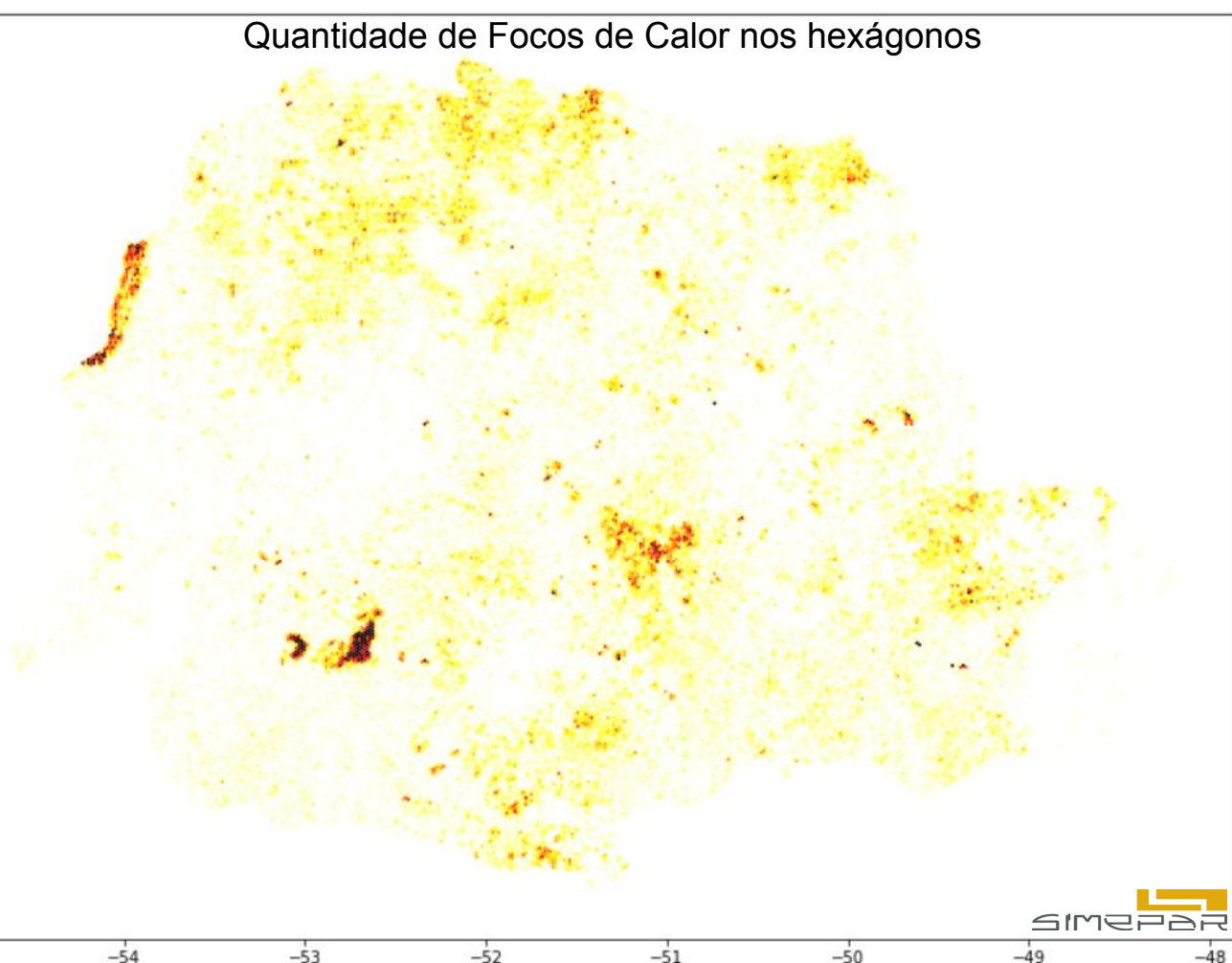
80

60

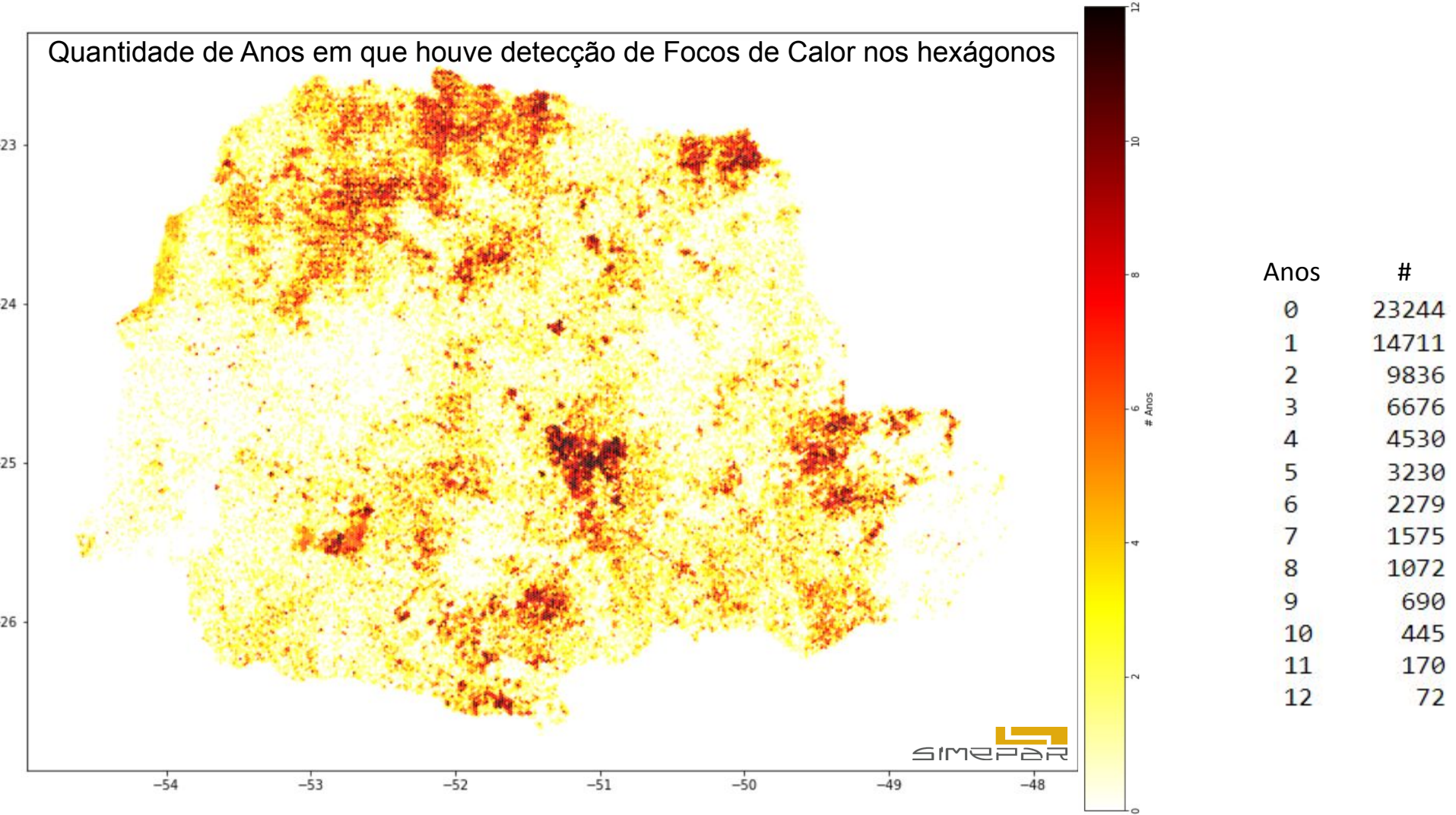
40

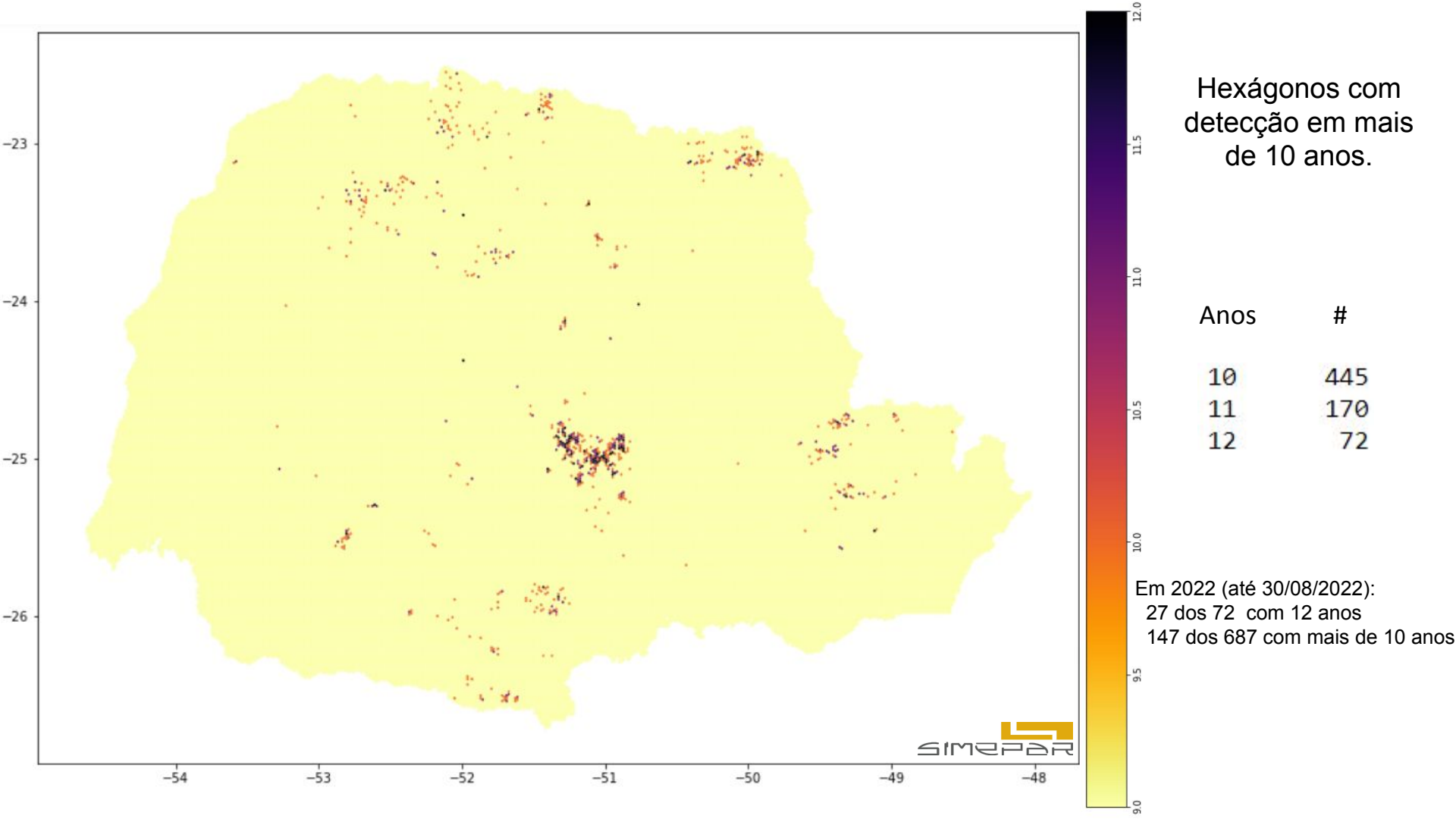
20

0



Quantidade de Anos em que houve detecção de Focos de Calor nos hexágonos





Mês mais frequente que houve detecção de Focos de Calor nos hexágonos

-23

-24

-25

-26

-54

-53

-52

-51

-50

-49

-48

SIMEPAR

Mês mais Frequente

2

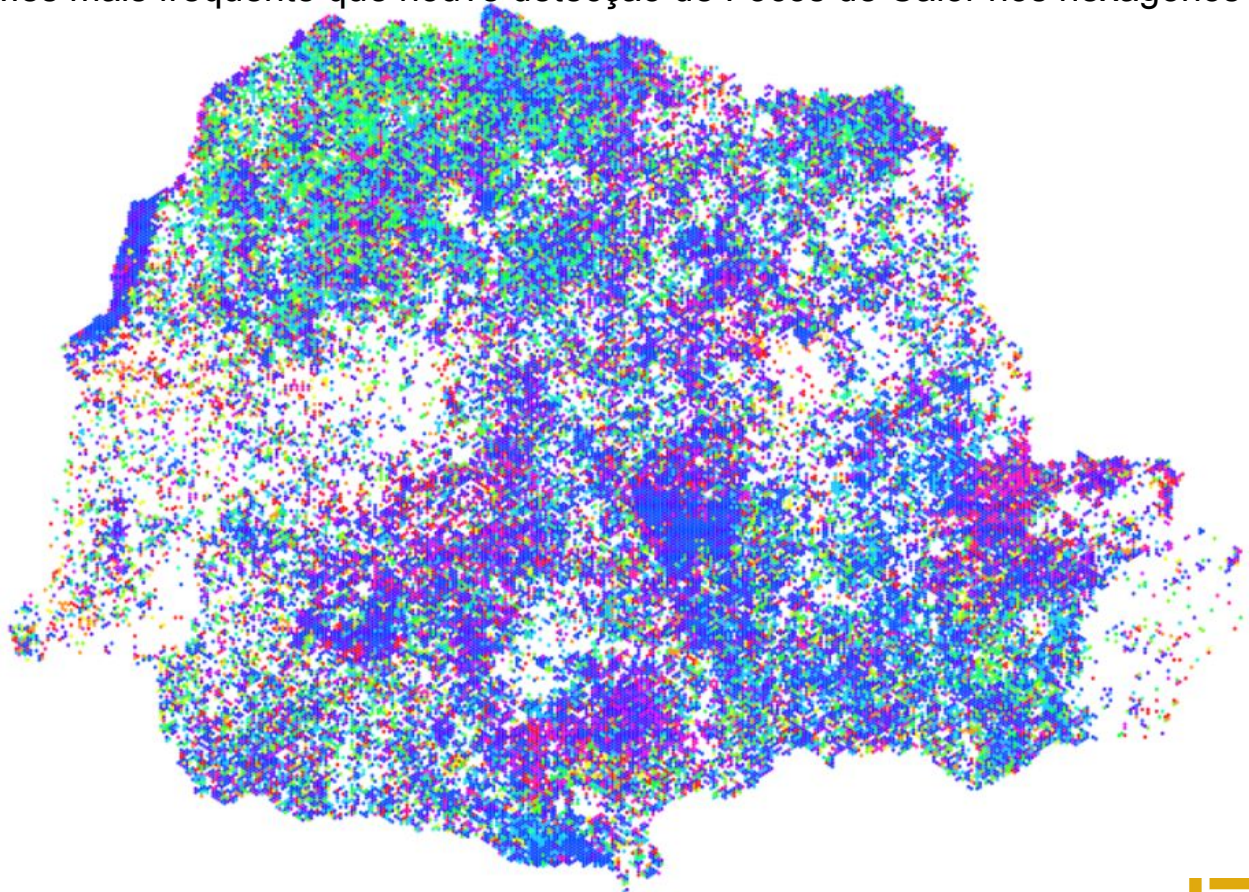
4

6

8

10

12



Dias sem chuva mais frequente dos Focos de Calor nos hexágonos

-23

-24

-25

-26

-54

-53

-52

-51

-50

-49

-48

SIMEPAR

Número de dias sem chuva



Uso e Cobertura do Solo de cada Hexágono

